



# **COLD WATER STATIONARY PRESSURE CLEANER SERIES**

**B3000/30**

Jetblaster Cold Water Stationary Pressure Cleaner

**Jetblaster Australia Pty Ltd**  
**8/21/2012**

## **INSTRUCT OPERATORS IN THE CARE AND USE OF THE MACHINE BEFORE USE**

Before attempting to operate your machine, please read this instruction manual thoroughly, following all directions carefully. Doing so will ensure the safe operation of the unit and a long, trouble-free life for the machine.

### **WARRANTY**

This product is warranted against faults in manufacture for 12 months from the date of purchase. Keep your receipt as proof of purchase. This warranty is invalid if the product is found to have been abused in any way or not used for the purpose of its intended use. Routine maintenance is the owner's responsibility. Failure to maintain the machine in line with the services outlined on page 6 will invalidate the warranty.

Where possible, return faulty goods to the place of purchase. **NO** products can be returned to us without prior permission. The reason for return must be clearly stated.

**NOTE: WARRANTY IS NOT TRANSFERABLE TO THIRD PARTIES IN THE EVENT OF SALE OF THE MACHINE WITHIN THE WARRANTY PERIOD. PLEASE NOTE THAT ANY PARTS USED IN WARRANTY REPAIRS ARE WARRANTED ONLY FOR THE REMAINING PERIOD OF THE ORIGINAL WARRANTY OF THE PARENT PRODUCT.**

**WARRANTY DOES NOT COVER WEARING PARTS SUCH AS ORINGS, SEALS, VALVES, BYPASS, HOSES, GUNS, LANCES AND NOZZLES AFTER 14 DAYS FROM PURCHASE.**

### **STANDARD EQUIPMENT**

Before proceeding with assembly of your unit, check that all parts listed below are included. (Some units are purchased without accessories)

1. Gun assembly and high-pressure hose
2. Lance and nozzle assembly

## **SAFETY PRECAUTIONS – IMPORTANT!**

- 1) **NEVER** DIRECTLY THE SPRAY ANY PERSON OR ANIMAL
- 2) **NEVER** HOLD A FINGER OVER THE SPRAY JET NOZZLE
- 3) **NEVER** DIRECTLY SPRAY AT THE MACHINE ITSELF OR ANY ELECTRICAL COMPONENTS
- 4) AFTER USE OF THE MACHINE RELEASE THE PRESSURE IN THE HIGH-PRESSURE HOSE BY PRESSING THE TRIGGER ON
- 5) **DO NOT** ATTEMPT ANY MECHANICAL REPAIR. IF YOU HAVE ANY PROBLEMS WITH THE UNIT PLEASE CONTACT YOUR LOCAL SERVICE AGENT.
- 6) **NEVER** SUPPLY ANY LIQUID OTHER THAN WATER TO THE WATER INLET
- 7) **NEVER** PULL THE HIGH-PRESSURE HOSE IF IT HAS FORMED A KINK OR NOOSE. NEVER PULL HOSE OVER SHARP OBJECTS.
- 8) **NEVER** RUN THE MACHINE OFF OF AN EXTENSION LEAD AS THIS WILL OVERLOAD THE SYSTEM AND CAN BURN OUT THE MOTOR AND / OR THE ELECTRICAL COMPONENTS IN THE ELECTRICAL BOX.
- 9) **DO NOT** ATTEMPT TO DISCONNECT ANY HOSE OR COUPLING WITH PRESSURE STILL IN THE SYSTEM
- 10) **DO NOT** OPERATE THE MACHINE WHILST STANDING ON LADDERS. USE A PLATFORM TOWER OR SCAFFOLDING
- 11) CHILDREN ARE **NOT** PERMITTED TO USE THE MACHINE
- 12) WE RECOMMEND THE USE OF SAFETY GOGGLES WHEN USING THIS MACHINE

## **HIGH PRESSURE SETTING**

The high-pressure pump is factory set to operate at its rated pressure. DO NOT ADJUST THE PRESSURE. Tampering with the pressure regulator will void warranty and can be dangerous.

If pressure drops off, check the nozzle for wear. Nozzles should be replaced on a regular basis. Using the incorrect nozzle size or worn nozzles will void warranty and can be dangerous to the operator.

## **ASSEMBLY AND PREPARATION FOR USE**

1. Check the oil in the pump. Oil level should cover the red spot on the oil sight glass. **Do not** mix different oil grades. Drain old oil first via drain plug at the rear or bottom of the pump and fill with new oil. Fill with SAE 20/30 Oil or close to that grade.
2. Ensure breather / dip stick plug is fitted to the pump (yellow) before operating the machine. Breather plug ensures against over pressuring the crankcase chamber and blowing the oil seals.

## **HIGH PRESSURE HOSE**

Connect the high-pressure hose to the threaded water pressure outlet of the machine via the screw coupling. No tools are required.

## **WATER SUPPLY HOSE**

Use a good quality flexible hose (not supplied) of 19mm diameter hose at 4mtrs long minimum. DO NOT use a hardline hose as this will damage the pump and blow the internal bypass hose.

As your unit comes with an Automatic Stop/Start Time Delay this unit can only be operated off of the mains water. It can be fed from a water tank, but will require a delivery pump in order to activate the Automatic Stop/Start. If you only have tank water without a delivery pump then the Automatic Stop/Start will not activate and the unit will need to be switched off when the trigger is released.

Secure one end of the hose to the inlet connector, ensuring a leak-proof connection.

## **OPERATION**

1. Turn on water supply
2. Pull trigger to expel all the air from the system
3. Water will trickle from the end of the lance when the air is expelled
4. Switch machine on

5. Check that there are no leaks in the line connections, gun or lance. Pressure commences when the trigger is squeezed.
6. Ensure high pressure hose is not tangled and then proceed to clean.

## **KEEP THE MACHINE OUT OF MOISTURE LADEN ATMOSPHERES**

### **HIGH PRESSURE SETTINGS**

The high-pressure pump is factory set to operate at its rated pressure. DO NOT ADJUST. Tampering with the pressure regulator will void warranty and may be hazardous.

### **ACCESSORIES**

Your Jetblaster water blaster can be used with a wide variety of optional extras to enhance performance. The accessories then can be connected to the trigger via quick connect couplers which are sold separately.

#### **List of Accessories**

1. **Turbo Lance** – *can cut cleaning in half*
2. **Sandblasting Head** – *ideal for rust removal, paint stripping and graffiti removal*
3. **Adjustable Vario Nozzle Head** – *allows high/low pressure adjustment and variable angle at the twist of the nozzle*
4. **Optional Lances** – *range of optional lance lengths.*
5. **Rotary Floor Cleaner** – *allows flat surfaces to be cleaned in a fraction of the time*
6. **Foam Lance** – *efficient use of chemicals and ease of cleaning equipment*

## **CARE AND MAINTENANCE**

### **After each use...**

- If cleaning agents have mixed with incoming water, flush the machine with clean water after use.
- In anti-freeze conditions, use anti-freeze with the flush water or flush completely.
- **Never** run the machine without water.

## **DAILY CHECKLIST - IMPORTANT**

1. Check pump oil level
2. Check all electrical connections for safety
3. Inspect the nozzles for wear
4. Check for leaks in gun, lance, hose, and fittings.
5. Check water filter and clean if necessary
6. Inspect unloader/ bypass valve

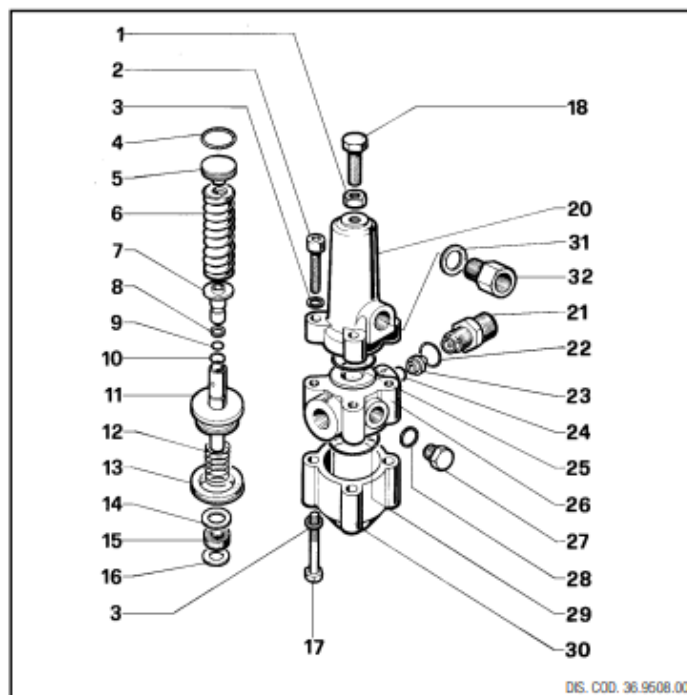
## **3-MONTHLY REGULAR SERVICE**

All industrial machines require a full service every three months: (depending upon usage)

1. Change pump oil
2. Check filter for debris
3. Inspect unloader valve and safety valves
4. Check all pressure components for leaks and replace as needed.
5. Replace nozzles
6. Check and replace hoses if necessary

## BYPASS BREAKDOWN – CONTINUES ONTO NEXT PAGE

### AUTOMATIC PRESSURE REGULATORS REGOLATORI AUTOMATICI DI PRESSIONE



**K7**

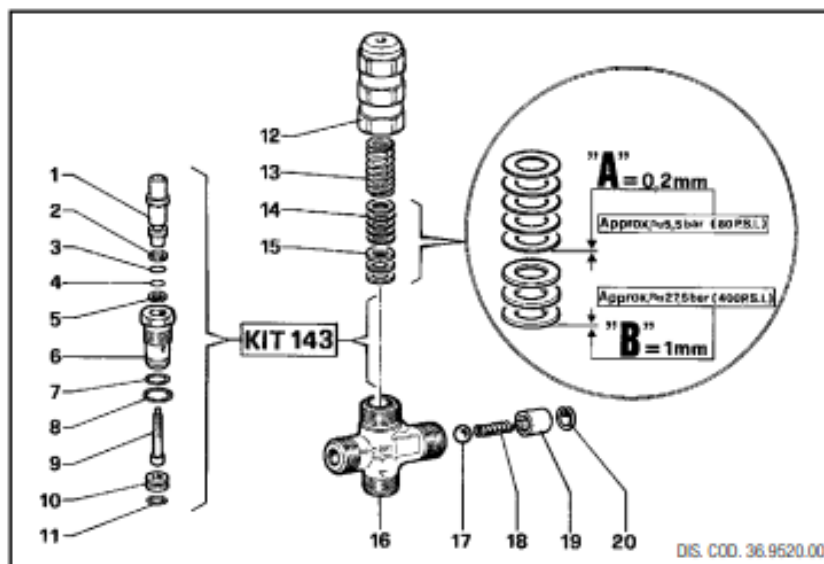
KIT N.	KIT 70
Positions Included	4 - 7 - 8 - 9 - 10 11 - 12 - 13 - 15 - 16 22 - 24 - 25 - 28 - 29
Posizioni Include	
N. pcs.	1

\*\*\* TAB. "A" - TABLE "A"

MODEL	POS.	CODE CODICE	DESCRIPTION DESCRIZIONE	N. PCS.
<b>K 7.0</b> 8÷11 l/min.	21	10.0078.70	Nipplo G 3/8 con foro Ø 3	1
	23	10.0076.66	Ugello Ø 2,2	1
	32	36.3117.70	Nipplo G 3/8	1
<b>K 7.1</b> 11÷16 l/min.	21	10.0078.70	Nipplo G 3/8 con foro Ø 3	1
	23	10.0077.66	Ugello Ø 2,5	1
	32	36.3116.70	Nipplo G 3/8	1
<b>K 7.2</b> 16÷25 l/min.	21	10.0160.70	Nipplo G 3/8 con foro Ø 3,25	1
	23	10.0162.66	Ugello Ø 2,75	1
	32	36.3118.70	Nipplo G 3/8	1
<b>K 7.3</b> 25÷41 l/min.	21	10.0161.70	Nipplo G 3/8 con foro Ø 3,5	1
	23	10.0163.66	Ugello Ø 3	1
	32	36.3119.70	Nipplo G 3/8	1

POS.	CODE CODICE	DESCRIPTION DESCRIZIONE	N. PCS.
1	92.2368.00	Dado M10	1
2	99.3084.00	Vite M8x30 UNI 5931	4
3	96.7014.00	Rosetta Ø 8,4x13x0,8	8
4	90.3849.00	OR Ø 20,63x2,62	KIT 70 1
5	36.3095.70	Piattello molla	1
6	94.7466.00	Molla Ø 17x60	1
7	36.3094.66	Sede valvola	KIT 70 1
8	90.5052.00	Anello per OR	KIT 70 1
9	90.3820.00	OR Ø 9,13x2,62 - Spec.	KIT 70 1
10	90.3582.00	OR Ø 9,25x1,78	KIT 70 1
11	36.3097.02	Assieme pistoncino e sfera	KIT 70 1
12	94.7464.00	Molla Ø 17x17	KIT 70 1
13	90.2766.00	Anello tenuta Ø 40	KIT 70 1
14	96.7215.00	Rosetta Ø 13x20x2	1
15	90.2565.00	Anello tenuta Ø 10	KIT 70 1
16	90.5063.00	Anello per OR	KIT 70 1

POS.	CODE CODICE	DESCRIPTION DESCRIZIONE	N. PCS.
17	99.3127.00	Vite M8x45 UNI 5737	4
18	99.3663.00	Vite M10x25 UNI 5740	1
20	36.3090.41	Corpo valvola superiore	1
21	***	Vedi Tab. "A" - See table "A"	
22	90.3833.00	OR Ø 13,95x2,62	KIT 70 1
23	***	Vedi Tab. "A" - See table "A"	
24	90.3823.00	OR Ø 9,92x2,62	KIT 70 1
25	90.3863.00	OR Ø 28,25x2,62	KIT 70 1
26	36.3091.41	Corpo valvola centrale	1
27	98.2041.00	Tappo G 1/4x9	2
28	90.3585.00	OR Ø 10,82x1,78	KIT 70 2
29	90.3871.00	OR Ø 34,60x2,62	KIT 70 1
30	36.3092.41	Corpo valvola inferiore	1
31	96.7380.00	Rosetta Ø 17,5x23x1,5	1
32	***	Vedi tab. "A" - See table "A"	



**HX**

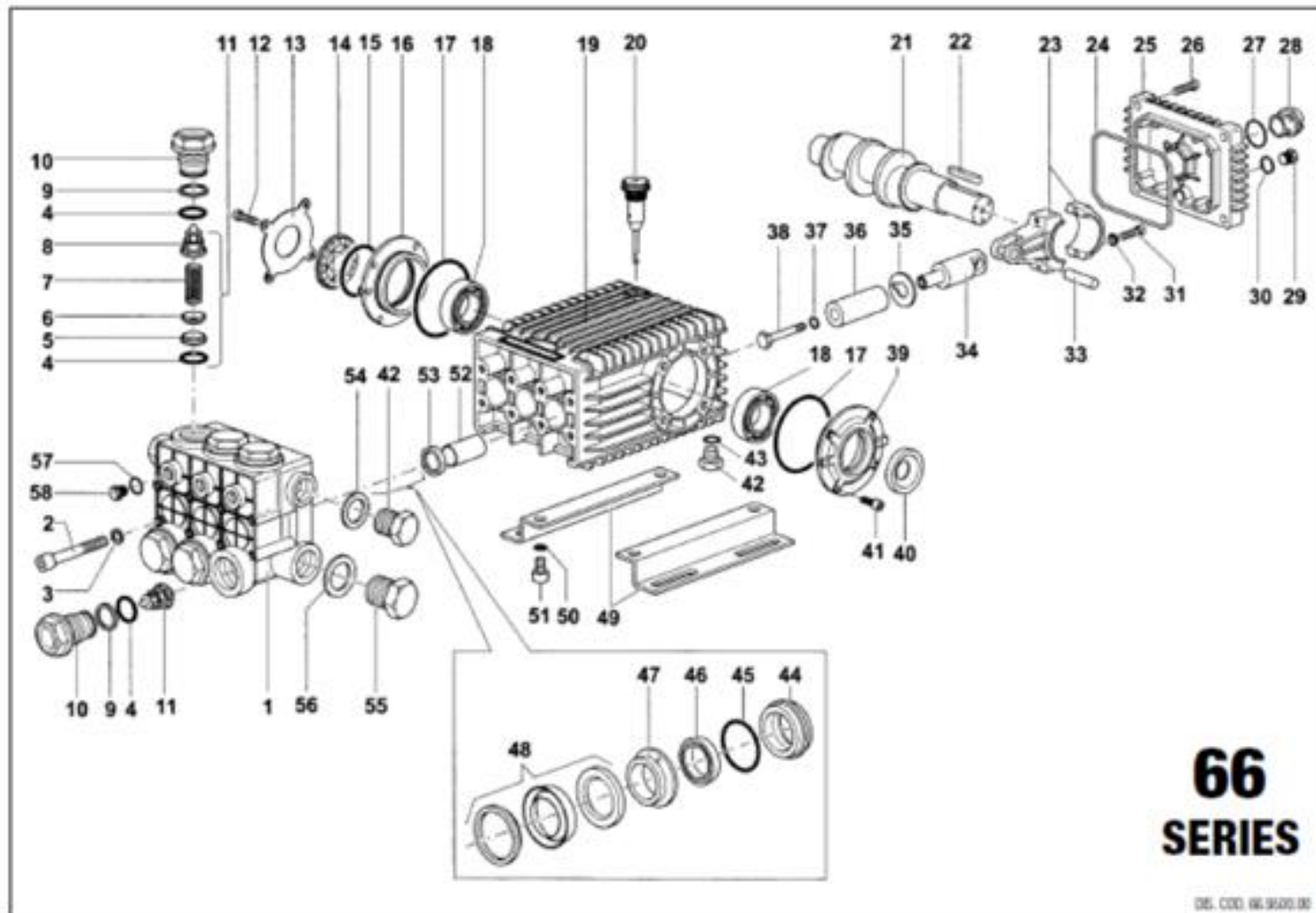
KIT N.	KIT 143
Positions Included	1 - 2 - 3 - 4 5 - 6 - 7 - 8 9 - 10 - 11
Posizioni Include	
N. pcs.	1

POS.	CODE CODICE	DESCRIPTION DESCRIZIONE	N. PCS.
1	36.3237.70	Pistoncino di comando	1
2	90.5020.00	Anello per OR	1
3	90.3570.00	OR Ø 4,48x1,78	1
4	90.3568.00	OR Ø 3,69x1,78	1
5	90.5007.00	Anello per OR	1
6	36.3238.70	Boccola di guida	1
7	90.3581.00	OR Ø 8,73x1,78	1
8	90.3589.00	OR Ø 12,42x1,78	1
9	36.3239.66	Valvola sferica	1
10	10.0085.66	Sede valvola	1

POS.	CODE CODICE	DESCRIPTION DESCRIZIONE	N. PCS.
11	90.3576.00	OR Ø 6,75x1,78	1
12	36.3241.70	Pomolo	1
13	94.7400.00	Molla Ø 11,8x28,5	1
14	96.7017.00	Rosetta Ø 8,4x15x0,2	5
15	96.7018.00	Rosetta Ø 8,4x15x1	3
16	36.3236.41	Corpo valvola	1
17	97.4800.00	Sfera Ø 9/32"	1
18	94.7332.00	Molla Ø 6,1x19	1
19	36.3240.51	Guida molla	1
20	90.0067.00	Anello di fermo	1



PUMP BREAKDOWN – CONTINUES ONTO NEXT PAGE



KIT N.	KIT 2	KIT 3	KIT 169	PISTON - PISTONE Ø 20		PISTON - PISTONE Ø 22		PISTON - PISTONE Ø 24	
				MODEL - MODELLO:		MODEL - MODELLO:		MODEL - MODELLO:	
Posizioni Incluse	53	40	4-5-6 7-8 (11)	W2525 - T2530 - T2535		W2030 - W2035 T2040		W2141 - T1750	
				KIT 170	KIT 171	KIT 172	KIT 173	KIT 181	KIT 182
N. pos.	3	2	6	3	1	3	1	3	1

STANDARD  
VERSION

VERSIONE  
STANDARD

W2030 - W2035 W2141 - W2525 T1750 - T2040 T2530 - T2535
--

POS.	CODE CODICE	DESCRIPTION DESCRIZIONE	N. PCS.
1	66.1200.41	Testata pompa (pistone Ø 20)	1
	66.1201.41	Testata pompa (pistone Ø 22)	1
	66.1202.41	Testata pompa (pistone Ø 24)	1
2	99.3801.00	Vite M 10x90 UNI 5931 8.8 Zincata	8
3	96.7104.00	Rosetta Ø 10 Schnorr	8
4	90.3857.00	OR Ø 23,81x2,62	KIT 169 12
5	36.2033.66	Sede valvola	KIT 169 6
6	36.2034.76	Valvola	KIT 169 6
7	94.7388.00	Molla Ø 10x18,5	KIT 169 6
8	36.2035.51	Guida valvola	KIT 169 6
9	90.5165.00	Anello per OR	6
10	66.1300.41	Tappo M 32x1,5x29,5	6
11	36.7127.01	Gruppo valvola	KIT 169 6
12	99.3069.00	Vite M 8x25 UNI 5931 8.8 Zincata	4
13	66.1502.74	Coperchio	1
14	44.2118.01	Distanziale con indicatore	1
15	90.4097.00	OR Ø 55,56x3,53	1
16	66.1501.22	Coperchio laterale carter	1
17	90.3913.00	OR Ø 67,95x2,62	2
18	91.8380.00	Cuscinetto a rulli NJ 2206 EC	2
19	66.0100.22	Carter	1
20	98.2106.00	Tappo carico olio G 3/8	1
21	66.0200.35	Albero W2525 - W2030 - T2530	1
	66.0204.35	Albero W2035 - W2141 - T2535 - T2040 - T1750	1
22	91.4892.00	Linguetta	1
23	66.0300.01	Bielle completa	3
24	90.3922.00	OR Ø 133,02x2,62	1
25	66.1600.22	Coperchio posteriore	1
26	99.1884.00	Vite M 6x20 UNI 5931 8.8 Zincata	4
27	90.4051.00	OR Ø 26,58x3,53	1
28	63.2100.51	Spta livello olio	1
29	98.2041.00	Tappo G 1/4"x9	1
30	90.3585.00	OR Ø 10,82x1,78	1
31	99.3099.00	Vite M8x35 UNI 5931 Zincata	6
32	96.7014.00	Rosetta Ø 8 Schnorr	6
33	97.7405.00	Spinotto Ø 14x39	3

POS.	CODE CODICE	DESCRIPTION DESCRIZIONE	N. PCS.
34	66.0500.64	Guida pistone	3
35	96.7101.00	Rosetta Ø 10x28x0,5	3
	66.0400.09	Pistone Ø 20x54	3
36	66.0401.09	Pistone Ø 22x54	3
	66.0404.09	Pistone Ø 24x54	3
37	90.3584.00	OR Ø 10,82x1,78-90 Sh.	3
38	66.2195.66	Vite fissaggio pistone	3
39	66.1500.22	Coperchio laterale carter	1
40	90.1648.00	Anello radiale Ø 30x55x7	KIT 3 1
41	99.3039.00	Vite M 8x16 UNI 5931 8.8 Zincata	4
42	98.2100.00	Tappo G 3/8"x13	2
43	90.3833.00	OR Ø 13,95x2,62	1
	66.0800.70	Anello di fondo Ø 20	KIT 171 3
44	66.0801.70	Anello di fondo Ø 22	KIT 173 3
	66.0804.70	Anello di fondo Ø 24	KIT 182 3
45	90.3616.00	OR Ø 34,65x1,78	KIT 171-173-182 3
	90.2690.00	Anello di tenuta Ø 20x28x8,5 L.P. seal	KIT 170-171 3
46	90.2715.00	Anello di tenuta Ø 22x30x8,5 L.P. seal	KIT 172-173 3
	90.2738.00	Anello di tenuta Ø 24x32x8,5 L.P. seal	KIT 181-182 3
	66.2160.70	Anello intermedio Ø 20	KIT 171 3
47	66.2161.70	Anello intermedio Ø 22	KIT 173 3
	66.2164.70	Anello intermedio Ø 24	KIT 182 3
	90.2692.00	Anello di tenuta Ø 20x30x10 H.P. seal	KIT 170-171 3
48	90.2717.00	Anello di tenuta Ø 22x32x10 H.P. seal	KIT 172-173 3
	90.2741.00	Anello di tenuta Ø 24x34x10 H.P. seal	KIT 181-182 3
49	47.2000.74	Piedino fissaggio pompa	2
50	96.7106.00	Rosetta Ø 10 DIN 7980	4
51	99.3644.00	Vite M 10x18 UNI 5931 8.8 Zincata	4
52	90.9126.00	Boccola Ø 22x25x30	3
53	90.1625.00	Anello radiale Ø 22x32x5,5	KIT 2 3
54	96.7380.00	Rosetta Ø 17,5x23x1,5	1
55	98.2268.00	Tappo G 3/4"x16	1
56	96.7700.00	Rosetta Ø 26,5x32x1,5	1
57	90.3585.00	OR Ø 10,82x1,78	3
58	98.2043.00	Tappo G 1/4"x13	3

**MOTOR BREAKDOWN – CONTINUES ONTO NEXT PAGE**



**Nicolini & C. S.r.l.**

Via Bezzecchi, 1

**42012 Campagnola E. R.E. - ITALY**

Cap soc. € 70.000 int. vers.

Cod.Fisc./ Part.IVA IT **00162380356**

<http://www.nicolinimotori.it>

e-mail: [info@nicolinimotori.it](mailto:info@nicolinimotori.it)

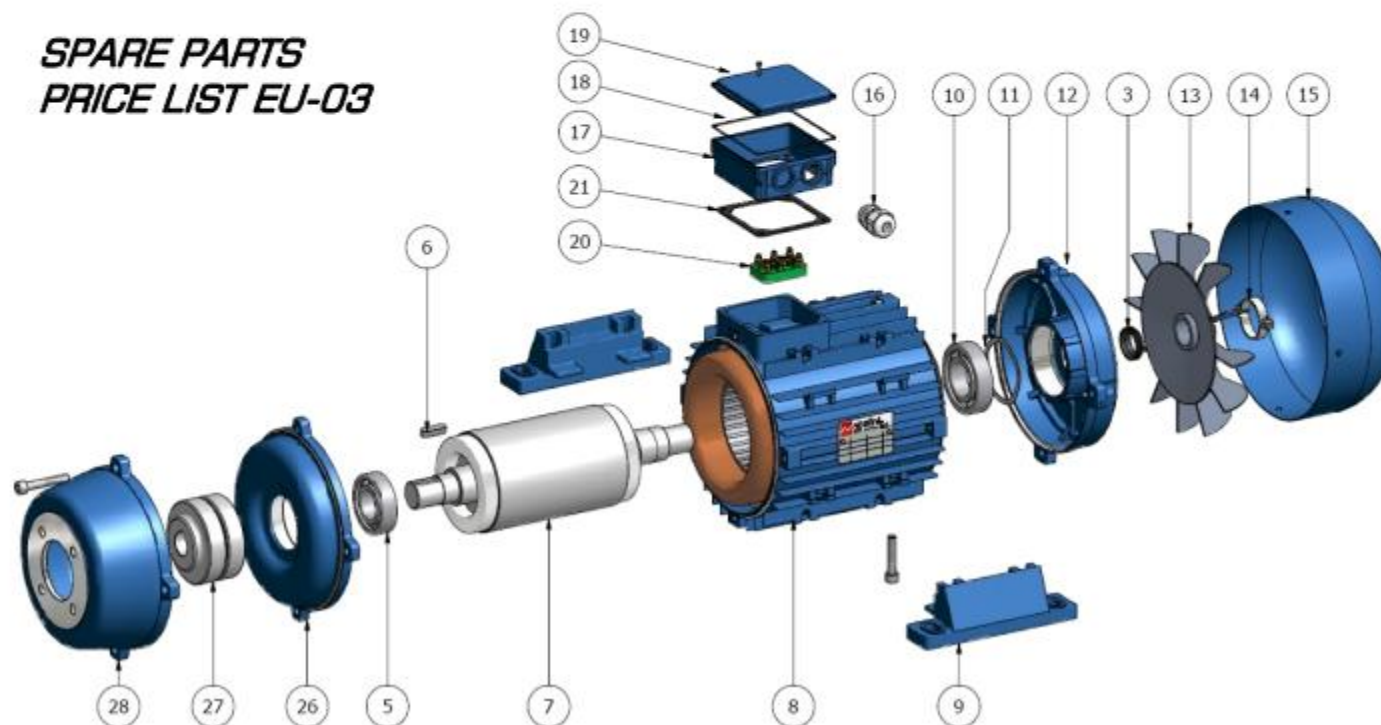
Tel. **+39 0522 652820**

Fax **+39 0522 652816**

# MOTOR DOUBLE FLANGE

***LISTINO RICAMBI EU-03***

***SPARE PARTS  
PRICE LIST EU-03***



nr.	Descrizione - Description	112	132	160
03	Anello tenuta - Rubber seal ring	€ 1,45	€ 3,51	€ 3,99
06	Chiavetta - Key	€ 0,53	€ 0,72	€ 1,32
07	Albero rotore - Rotor shaft	= =	= =	= =
08	Carcassa+Avvolgimento - Casing+Coil	= =	= =	= =
09	Piedi assemblati - Separate feet	€ 7,20	€ 9,00	€ 12,00
11	Anello a molla - Split ring	€ 0,66	€ 0,66	€ 1,33
12	Scudo posteriore - Rear shield	€ 15,18	€ 26,93	€ 40,00
13	Ventola - Fan	€ 2,42	€ 3,32	€ 5,32
14	Anello ventola - Fan fixing ring	€ 0,48	€ 0,54	€ 0,66
15	Copriventola - Fan cover	€ 5,81	€ 7,26	€ 11,35
16	Passacavo - Core hitch	€ 0,97	€ 2,11	€ 2,11
17	Base copribasett. - Terminal box	€ 2,75	€ 5,50	€ 11,00
18	Guarnizione OR - OR seal	€ 0,22	€ 0,44	€ 0,77
19	Copribasetta - Cover box	€ 1,10	€ 2,75	€ 3,30
20	Morsettiera - Terminal strip	€ 2,11	€ 2,42	€ 4,96
21	Guarnizione - Seal for cover	€ 0,30	€ 0,42	€ 0,66
26	Flangia Interna	€ 23,50	€ 31,10	€ 65,20
27	Giunto Elastico	€ 9,50	€ 32,50	€ 45,00
28	Flangia Esterna	€ 17,80	€ 30,00	€ 76,80
		<b>6207 ZZ</b>	<b>6308 ZZ</b>	<b>6309 ZZ</b>
05-10	Cuscinetti - Bearings	€ 8,36	€ 16,2	€ 19,3

UNICREDIT cod. IBAN: IT 84L0322666360000500011235 + CREDEM cod. IBAN: IT 69 Y 0303266210010000000994

**CONDIZIONI GENERALI DI VENDITA:** La merce viaggia a rischio e pericolo del committente anche se venduta franco destino. Trascorsi 8 gg. dal ricevimento della merce non si accettano reclami. In caso di ritardo pagamento vi saranno addebitati gli interessi di mora pari al tasso bancario in vigore al momento. Per ogni controversia sarà competente il Foro di Reggio Emilia.



# STATIONARY WIRING DIAGRAM

