



COLD WATER STATIONARY PRESSURE CLEANER SERIES

B1500

Jetblaster Cold Water Stationary Pressure Cleaner

Jetblaster Australia Pty Ltd
8/21/2012

INSTRUCT OPERATORS IN THE CARE AND USE OF THE MACHINE BEFORE USE

Before attempting to operate your machine, please read this instruction manual thoroughly, following all directions carefully. Doing so will ensure the safe operation of the unit and a long, trouble-free life for the machine.

WARRANTY

This product is warranted against faults in manufacture for 12 months from the date of purchase. Keep your receipt as proof of purchase. This warranty is invalid if the product is found to have been abused in any way or not used for the purpose of its intended use. Routine maintenance is the owner's responsibility. Failure to maintain the machine in line with the services outlined on page 6 will invalidate the warranty.

Where possible, return faulty goods to the place of purchase. **NO** products can be returned to us without prior permission. The reason for return must be clearly stated.

NOTE: WARRANTY IS NOT TRANSFERABLE TO THIRD PARTIES IN THE EVENT OF SALE OF THE MACHINE WITHIN THE WARRANTY PERIOD. PLEASE NOTE THAT ANY PARTS USED IN WARRANTY REPAIRS ARE WARRANTED ONLY FOR THE REMAINING PERIOD OF THE ORIGINAL WARRANTY OF THE PARENT PRODUCT.

WARRANTY DOES NOT COVER WEARING PARTS SUCH AS ORINGS, SEALS, VALVES, BYPASS, HOSES, GUNS, LANCES AND NOZZLES AFTER 14 DAYS FROM PURCHASE.

STANDARD EQUIPMENT

Before proceeding with assembly of your unit, check that all parts listed below are included. (Some units are purchased without accessories)

1. Gun assembly and high-pressure hose
2. Lance and nozzle assembly

SAFETY PRECAUTIONS – IMPORTANT!

- 1) **NEVER** DIRECTLY THE SPRAY ANY PERSON OR ANIMAL
- 2) **NEVER** HOLD A FINGER OVER THE SPRAY JET NOZZLE
- 3) **NEVER** DIRECTLY SPRAY AT THE MACHINE ITSELF OR ANY ELECTRICAL COMPONENTS
- 4) AFTER USE OF THE MACHINE RELEASE THE PRESSURE IN THE HIGH-PRESSURE HOSE BY PRESSING THE TRIGGER ON
- 5) **DO NOT** ATTEMPT ANY MECHANICAL REPAIR. IF YOU HAVE ANY PROBLEMS WITH THE UNIT PLEASE CONTACT YOUR LOCAL SERVICE AGENT.
- 6) **NEVER** SUPPLY ANY LIQUID OTHER THAN WATER TO THE WATER INLET
- 7) **NEVER** PULL THE HIGH-PRESSURE HOSE IF IT HAS FORMED A KINK OR NOOSE. NEVER PULL HOSE OVER SHARP OBJECTS.
- 8) **NEVER** RUN THE MACHINE OFF OF AN EXTENSION LEAD AS THIS WILL OVERLOAD THE SYSTEM AND CAN BURN OUT THE MOTOR AND / OR THE ELECTRICAL COMPONENTS IN THE ELECTRICAL BOX.
- 9) **DO NOT** ATTEMPT TO DISCONNECT ANY HOSE OR COUPLING WITH PRESSURE STILL IN THE SYSTEM
- 10) **DO NOT** OPERATE THE MACHINE WHILST STANDING ON LADDERS. USE A PLATFORM TOWER OR SCAFFOLDING
- 11) CHILDREN ARE **NOT** PERMITTED TO USE THE MACHINE
- 12) WE RECOMMEND THE USE OF SAFETY GOGGLES WHEN USING THIS MACHINE

HIGH PRESSURE SETTING

The high-pressure pump is factory set to operate at its rated pressure. DO NOT ADJUST THE PRESSURE. Tampering with the pressure regulator will void warranty and can be dangerous.

If pressure drops off, check the nozzle for wear. Nozzles should be replaced on a regular basis. Using the incorrect nozzle size or worn nozzles will void warranty and can be dangerous to the operator.

ASSEMBLY AND PREPARATION FOR USE

1. Check the oil in the pump. Oil level should cover the red spot on the oil sight glass. **Do not** mix different oil grades. Drain old oil first via drain plug at the rear or bottom of the pump and fill with new oil. Fill with SAE 20/30 Oil or close to that grade.
2. Ensure breather / dip stick plug is fitted to the pump (yellow) before operating the machine. Breather plug ensures against over pressuring the crankcase chamber and blowing the oil seals.

HIGH PRESSURE HOSE

Connect the high-pressure hose to the threaded water pressure outlet of the machine via the screw coupling. No tools are required.

WATER SUPPLY HOSE

Use a good quality flexible hose (not supplied) of 19mm diameter hose at 4mtrs long minimum. DO NOT use a hardline hose as this will damage the pump and blow the internal bypass hose.

As your unit comes with an Automatic Stop/Start Time Delay this unit can only be operated off of the mains water. It can be fed from a water tank, but will require a delivery pump in order to activate the Automatic Stop/Start. If you only have tank water without a delivery pump then the Automatic Stop/Start will not activate and the unit will need to be switched off when the trigger is released.

Secure one end of the hose to the inlet connector, ensuring a leak-proof connection.

OPERATION

1. Turn on water supply
2. Pull trigger to expel all the air from the system
3. Water will trickle from the end of the lance when the air is expelled
4. Switch machine on

5. Check that there are no leaks in the line connections, gun or lance. Pressure commences when the trigger is squeezed.
6. Ensure high pressure hose is not tangled and then proceed to clean.

KEEP THE MACHINE OUT OF MOISTURE LADEN ATMOSPHERES

HIGH PRESSURE SETTINGS

The high-pressure pump is factory set to operate at its rated pressure. DO NOT ADJUST. Tampering with the pressure regulator will void warranty and may be hazardous.

ACCESSORIES

Your Jetblaster water blaster can be used with a wide variety of optional extras to enhance performance. The accessories then can be connected to the trigger via quick connect couplers which are sold separately.

List of Accessories

1. **Turbo Lance** – *can cut cleaning in half*
2. **Sandblasting Head** – *ideal for rust removal, paint stripping and graffiti removal*
3. **Adjustable Vario Nozzle Head** – *allows high/low pressure adjustment and variable angle at the twist of the nozzle*
4. **Optional Lances** – *range of optional lance lengths.*
5. **Rotary Floor Cleaner** – *allows flat surfaces to be cleaned in a fraction of the time*
6. **Foam Lance** – *efficient use of chemicals and ease of cleaning equipment*

CARE AND MAINTENANCE

After each use...

- If cleaning agents have mixed with incoming water, flush the machine with clean water after use.
- In anti-freeze conditions, use anti-freeze with the flush water or flush completely.
- **Never** run the machine without water.

DAILY CHECKLIST - IMPORTANT

1. Check pump oil level
2. Check all electrical connections for safety
3. Inspect the nozzles for wear
4. Check for leaks in gun, lance, hose, and fittings.
5. Check water filter and clean if necessary
6. Inspect unloader/ bypass valve

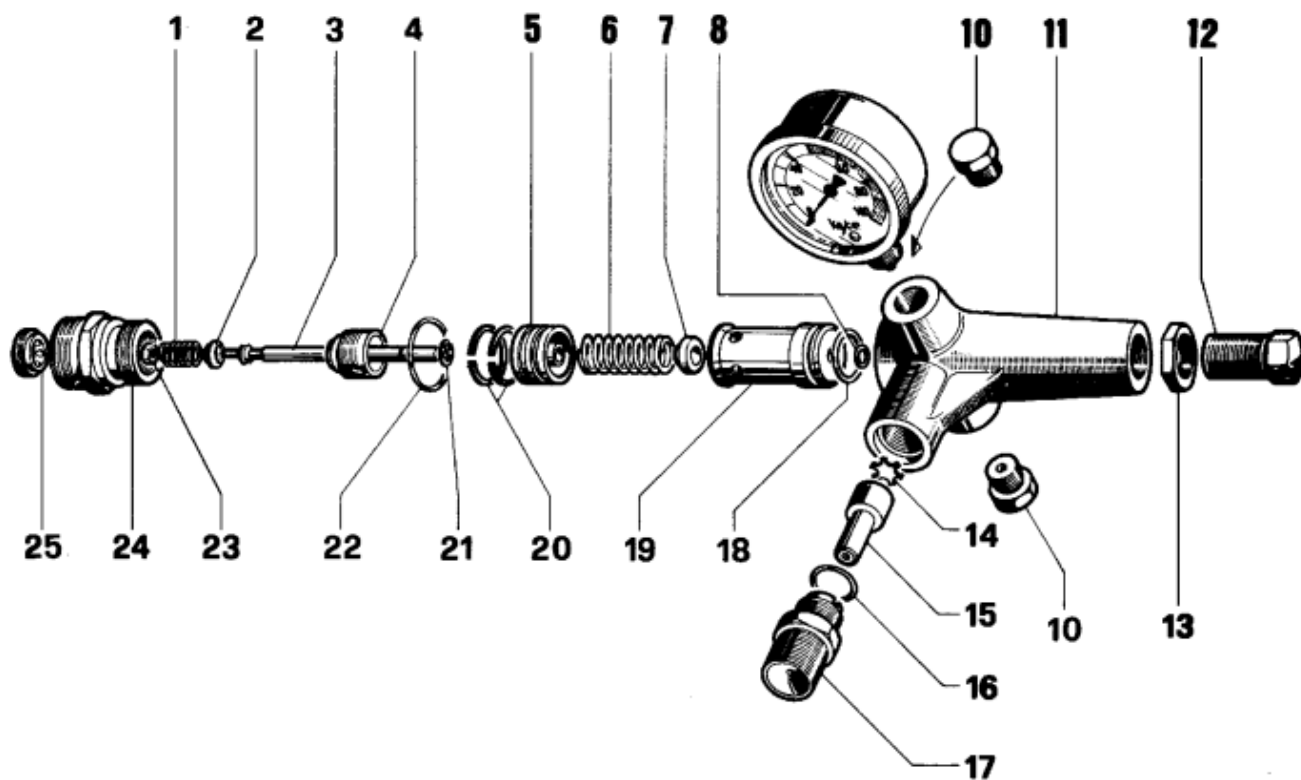
3-MONTHLY REGULAR SERVICE

All industrial machines require a full service every three months: (depending upon usage)

1. Change pump oil
2. Check filter for debris
3. Inspect unloader valve and safety valves
4. Check all pressure components for leaks and replace as needed.
5. Replace nozzles
6. Check and replace hoses if necessary

BYPASS VALVE BREAKDOWN – CONTINUED ONTO NEXT PAGE

**AUTOMATIC PRESSURE REGULATORS
REGULATEUR AUTOMATIQUE**



D.S. C.O.D. 36.95 06.00

K3

KIT N.	KIT 59 - (K3) (M ANTENANCE KIT) (KIT M ANUTENENIE)	KIT 61 - (K3) (COM PLETINTERRI KIT) (INTERNO COM PLETO)
P uestion lind ed P uestion lind ed	1-245 6-8-16-18 2-2-2-2-5	1-23-4 5-6-7-2 2-2-2-2-5
Nap	1	1

*** TAB."B" - TABLE "B"

M O D E	P O S.	C O D E C O D E	D E S C R I P T I O N D E S C R I P T I O N	N. P C S.
K 30 8÷11 l/h .n	15 17	363019 70 363020 70	Ueglo Ø 2 NappG 1Ø6 Ø 3	1 1
K 31 11÷16 l/h .n	15 17	363011 70 363020 70	Ueglo Ø 3 NappG 1Ø6 Ø 3	1 1
K 32 16÷21 l/h .n	15 17	363012 70 363021 70	Ueglo Ø 25 NappG 1Ø6 Ø 35	1 1

P O S.	C O D E C O D E	D E S C R I P T I O N D E S C R I P T I O N	N. P C S.
1	9 4737400	M olla Ø 93x155	KIT 59 -61 1
2	36300866	Va lv ola d a c	KIT 59 -61 1
3	36300466	A s v a lv ola	KIT 61 1
4	36303466	e l e g e s t e v a lv ola	KIT 59 -61 1
5	36300670	P l u n o n d i o e a c h o	KIT 59 -61 1
6	9 4740200	M olla Ø 12x36	KIT 59 -61 1
7	36300570	P à t e l l o r o l l a	KIT 61 1
8	9 0357200	O R Ø 58x178 q s	KIT 59 1
10	9 8204100	T a p p e 1A x 9	2
11	36300041	C o m p a l v o l a	1
12	36300164	V i l e d i r e g l o s e n	1
13	9 266000	D a d o M 16	1
14	363009 76	V a l v o l a i p a n	1
15	***	V e d i t a b . " B " - S e e t a b l e " B "	
16	9 0383300	O R Ø 139 5x 22	KIT 59 1
17	***	V e d i t a b . " B " - S e e t a b l e " B "	
18	9 0383500	O R Ø 150 8x 22	KIT 59 1
19	36300370	G u d a d a s	1
20	9 2770700	a s a e l a s c Ø 2	KIT 59 -61 4
21	9 00509 00	A n t e n n a l a s s a l e	KIT 59 -61 1
22	9 0359 800	O R Ø 203 5x 178	KIT 59 -61 1
23	9 219 2500	D a d o M 4x33x NIO X	KIT 59 -61 1
24	363049 70	S e d e v a l v o l a	KIT 61 1
25	36303570	G i h e r a	KIT 59 -61 1

K5

KIT N.	KIT 58 - (K5) (M ANTENANCE KIT) (KIT M ANUTENENIE)	KIT 60 - (K5) (COM PLETINTERRI KIT) (INTERNO COM PLETO)
P uestion lind ed P uestion lind ed	1-245 6-8-16-18 2-2-2-2-5	1-23-4 5-6-7-2 2-2-2-2-5
Nap	1	1

*** TAB."A" - TABLE "A"

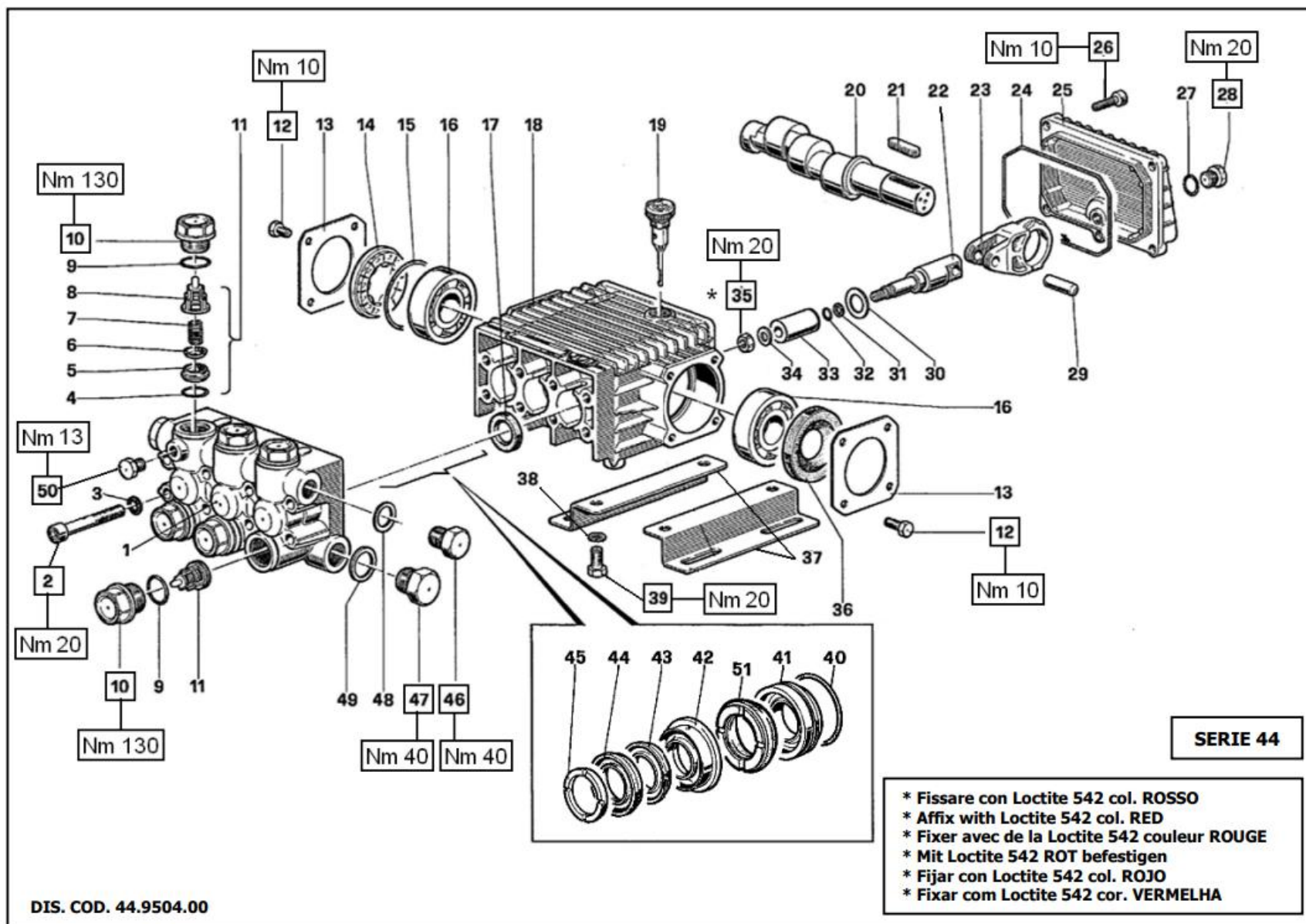
M O D E	P O S.	C O D E C O D E	D E S C R I P T I O N D E S C R I P T I O N	N. P C S.
K 50 8÷11 l/h .n	15 17	363019 70 363020 70	Ueglo Ø 2 NappG 1Ø6 Ø 3	1 1
K 51 11÷16 l/h .n	15 17	363011 70 363020 70	Ueglo Ø 3 NappG 1Ø6 Ø 3	1 1
K 52 16÷21 l/h .n	15 17	363012 70 363021 70	Ueglo Ø 25 NappG 1Ø6 Ø 35	1 1
K 53 25÷41 l/h .n	15 17	363013 70 363022 70	Ueglo Ø 3 NappG 1Ø6 Ø 35	1 1

P O S.	C O D E C O D E	D E S C R I P T I O N D E S C R I P T I O N	N. P C S.
1	9 4737400	M olla Ø 93x155	KIT 58-60 1
2	36300866	Va lv ola d a c	KIT 58-60 1
3	36303066	A s v a lv ola	KIT 60 1
4	36303466	e l e g e s t e v a lv ola	KIT 58-60 1
5	36303270	P l u n o n d i o e a c h o	KIT 58-60 1
6	9 4743000	M olla Ø 145x45	KIT 58-60 1
7	36303170	P à t e l l o r o l l a	KIT 60 1
8	9 0357200	O R Ø 58x178 q s	KIT 58 1
10	9 8204100	T a p p e 1A x 9	2
11	36302841	C o m p a l v o l a	1
12	36300164	V i l e d i r e g l o s e n	1
13	9 266000	D a d o M 16	1
14	363009 76	V a l v o l a i p a n	1
15	***	V e d i t a b . " A " - S e e t a b l e " A "	
16	9 0383300	O R Ø 139 5x 22	KIT 58 1
17	***	V e d i t a b . " A " - S e e t a b l e " A "	
18	9 0384500	O R Ø 187 2x 22	KIT 58 1
19	363029 70	G u d a d a s	1
20	9 2772000	a s a e l a s c Ø 2	KIT 58-60 4
21	9 00509 00	A n t e n n a l a s s a l e	KIT 58-60 1
22	9 03859 00	O R Ø 207 5x 22	
23	9 219 2500	D a d o M 4x33x NIO X	
24	36305070	S e d e v a l v o l a	
25	36303570	G i h e r a	

Created using
easyPDF Printer

[Click here to purchase a license to remove this image](#)

PUMP BREAKDOWN – CONTINUES ONTO NEXT PAGE





**W97 - W112 - W124 - W130
W140 - W150 - W154 - W170
W200 - W204 - W950 - W951
W952 - W953 - W954 - W955
W956 - W957 - W958 - W959
W14200 - W16180 - WW116
WW136 - WW156 - WW176
WW186 - WW189 - WW206
WW209 - WW960 - WW961
WW962**

KIT RICAMBI – SPARE KITS

KIT Nr.	KIT 23	KIT 123	KIT 124	KIT 158	PISTONE - PISTON Ø15					PISTONE - PISTON Ø18				
					KIT 88	KIT 89	KIT 90	KIT 125	KIT 130	KIT 126	KIT 127	KIT 128	KIT 129	KIT 131
Posizioni include Positions included	17	4 – 5 6 – 7 8 – (11)	9 - 10	9 - 10	43 – 44 51	42	45	40 – 41	40 – 41 42 – 43 44 – 45 51	40 – 41	43 – 44 51	42	45	40 – 41 42 – 43 44 – 45 51
Nr. Pcs.	3	6	6	6	3	3	6	3	1	3	3	3	6	1

OTTONE BRASS	PISTONE – PISTON Ø15	PISTONE – PISTON Ø18
	W130 – W150 – W170 W950 – W951 – W952 W953 – WW116 – WW136 – WW156 WW176 – WW186 – WW189 – WW206 WW209 – WW960 – WW961 – WW962	W97 – W112 – W124 W140 – W154 – W954 W955 – W956 – W957 W958 – W959
NICKEL	-	W200 – W204 W14200 – W16180

POS	COD.	DESCRIZIONE – DESCRIPTION - KIT	NR
1	44.1200.41	Testata Ø 15	1
	44.1204.41	Testata Ø 18	1
	44.1207.41	Testata Ø 18 – NICKEL	1
2	99.3175.00	Vite M8x60 UNI 5931	8
3	96.7014.00	Rosetta Ø 8.4x13x0.8	8
4	90.3841.00	OR Ø 17.13x2.62 (3068)	123 6
5	36.2003.66	Sede valvola	123 6
6	36.2001.76	Valvola	123 6
7	94.7376.00	Molla Ø 9.4x14.8	123 6
8	36.2025.51	Guida valvola	123 6
9	90.3847.00	OR Ø 20.24x2.62 (3081) 90 Sh.	124-158 6
10	98.2226.00	Tappo M24x1.5x17	124 6
	98.2225.00	Tappo M24x1.5x17 – NICKEL	158 6
11	36.7115.01	Gruppo valvola aspiraz./mand.	123 6
12	99.1807.00	Vite M6x10 UNI 5739	8
13	50.1500.74	Coperchio carter	2

POS	COD.	DESCRIZIONE – DESCRIPTION - KIT	NR
14	44.2118.01	Distanziale con indicatore	1
15	90.4097.00	OR Ø 55.56x3.53 (159)	1
16	91.8331.00	Cuscinetto a sfere 6305 – Spec.	2
17	90.1614.00	Anello rad. Ø 20x30x5	23 3
18	44.0100.22	Carter pompa	1
19	98.2103.00	Tappo carico olio G 3/8"	1
20	44.0200.35	Albero – WW186-WW206	1
	44.0203.35	Albero – W112-W140-W150-W950-W954 W955-W956-WW116-WW156-WW209-W200 W14200	1
	44.0205.35	Albero – WW189	1
	44.0206.35	Albero – W97-W124-W130-W154-W170 W951-W952-W953-W957-W958-W959 WW136-WW176-W204-W16180	1
21	91.4892.00	Linguetta 8x7x35 UNI 6604	1
22	44.0500.66	Guida pistone	3
23	44.0300.22	Biella	3
24	90.3920.00	OR Ø 101.27x2.62 (3400)	1
25	44.1600.22	Coperchio posteriore	1
26	99.1837.00	Vite M6x14 UNI 5931	5
27	90.3585.00	OR Ø 10.82x1.78 (2043)	1
28	98.2041.00	Tappo G 1/4"x9	1
29	97.7340.00	Spinotto Ø 10x29.5	3
30	96.7350.00	Rosetta Ø 16x27x1.7/0.7	3
31	90.5022.00	Anello antiest. Ø 6.2x9x1.5	3
32	90.3572.00	OR Ø 5.28x1.78 (2021) – Spec.	3

POS	COD.	DESCRIZIONE – DESCRIPTION - KIT	NR
33	52.0400.09	Pistone Ø 15	3
	44.0401.09	Pistone Ø 18	3
34	44.2115.70	Rosetta Ø 8 con collare	3
35	92.2216.00	Dado M8x13x5 – INOX	3
36	90.1641.00	Anello rad. Ø 25x62x10	1
37	50.2000.74	Piedino	2
38	96.7016.00	Rosetta Ø 8.4 UNI 1751	4
39	99.3037.00	Vite M8x16 UNI 5739	4
40	90.3612.00	OR Ø 31.47x1.78 (2125)	125-126 130-131 3
41	44.0800.70	Anello di fondo Ø 15	125-130 3
	44.0801.70	Anello di fondo Ø 18	126-131 3
42	52.2166.70	Anello intermedio Ø 15	89-130 3
	44.2161.70	Anello intermedio Ø 18	128-131 3
43	90.2622.00	Anello RESTOP Ø 15	88-130 3
	90.2683.00	Anello RESTOP Ø 18	127-131 3
44	90.2620.00	Anello tenuta Ø 15 HP	88-130 3
	90.2682.00	Anello tenuta Ø 18 HP	127-131 3
45	51.1000.51	Anello di testa Ø 15	90-130 3
	44.1001.51	Anello di testa Ø 18	129-131 3
46	98.2100.00	Tappo G 3/8"x13	1
47	98.2176.00	Tappo G 1/2"x10	1
48	96.7380.00	Rosetta Ø 17.5x23x1.5	1
49	96.7514.00	Rosetta Ø 21.5x27x1.5	1
50	98.1966.00	Tappo G 1/8"x8	1
51	90.2617.00	Anello tenuta Ø 15 LP	88-130 3
	90.2684.00	Anello tenuta Ø 18 LP	127-131 3

MOTOR BREAKDOWN – CONTINUES ONTO NEXT PAGE



Nicolini & C. S.r.l.

Via Bezzecchi, 1

42012 Campagnola E. R.E. - ITALY

Cap soc. € 70.000 int. vers.

Cod.Fisc./ Part.IVA IT 00162380356

<http://www.nicolinimotori.it>

e-mail: info@nicolinimotori.it

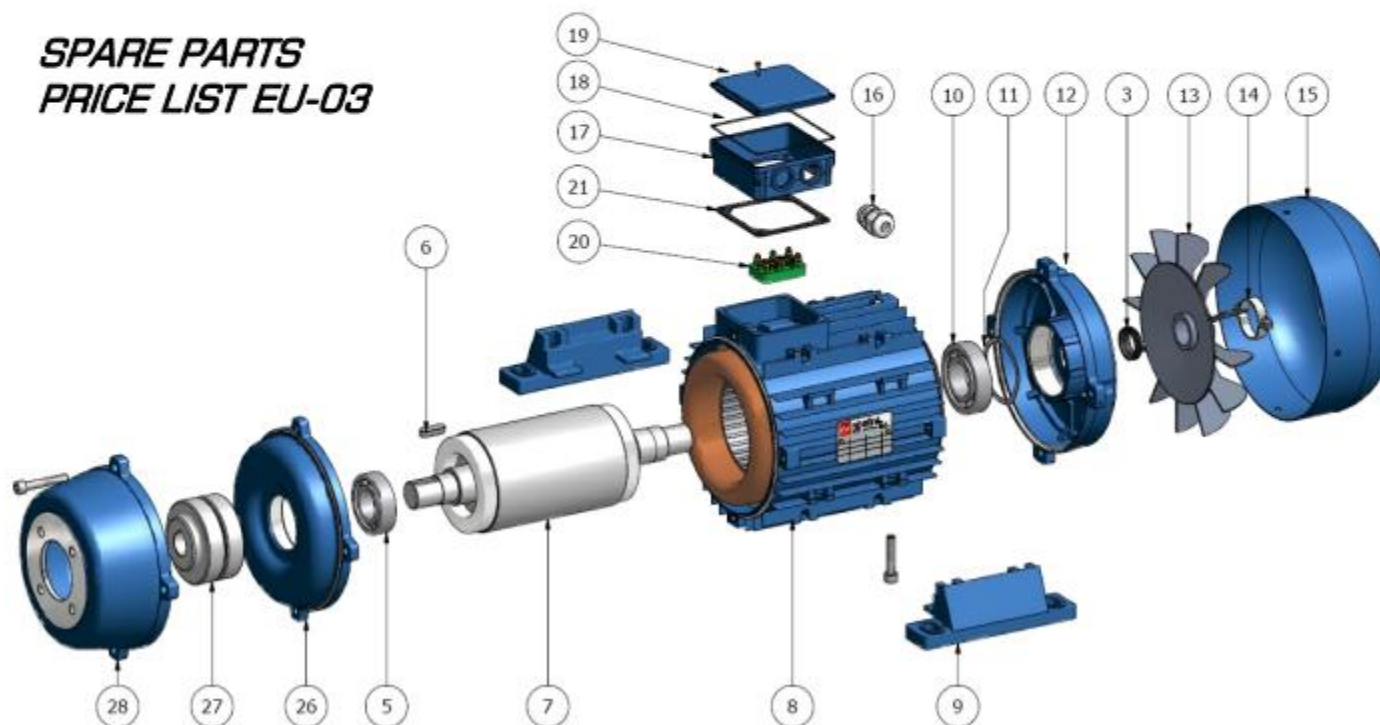
Tel. +39 0522 652820

Fax +39 0522 652816

MOTOR DOUBLE FLANGE

LISTINO RICAMBI EU-03

***SPARE PARTS
PRICE LIST EU-03***



nr.	Descrizione - <i>Description</i>	112	132	160
03	<i>Anello tenuta - Rubber seal ring</i>	€ 1,45	€ 3,51	€ 3,99
06	<i>Chiavetta - Key</i>	€ 0,53	€ 0,72	€ 1,32
07	<i>Albero rotore - Rotor shaft</i>	= =	= =	= =
08	<i>Carcassa+Avvolgimento - Casing+Coil</i>	= =	= =	= =
09	<i>Piedi assemblati - Separate feet</i>	€ 7,20	€ 9,00	€ 12,00
11	<i>Anello a molla - Split ring</i>	€ 0,66	€ 0,66	€ 1,33
12	<i>Scudo posteriore - Rear shield</i>	€ 15,18	€ 26,93	€ 40,00
13	<i>Ventola - Fan</i>	€ 2,42	€ 3,32	€ 5,32
14	<i>Anello ventola - Fan fixing ring</i>	€ 0,48	€ 0,54	€ 0,66
15	<i>Copriventola - Fan cover</i>	€ 5,81	€ 7,26	€ 11,35
16	<i>Passacavo - Core hitch</i>	€ 0,97	€ 2,11	€ 2,11
17	<i>Base copribaset. - Terminal box</i>	€ 2,75	€ 5,50	€ 11,00
18	<i>Guarnizione OR - OR seal</i>	€ 0,22	€ 0,44	€ 0,77
19	<i>Copribasetta - Cover box</i>	€ 1,10	€ 2,75	€ 3,30
20	<i>Morsettiera - Terminal strip</i>	€ 2,11	€ 2,42	€ 4,96
21	<i>Guarnizione - Seal for cover</i>	€ 0,30	€ 0,42	€ 0,66
26	<i>Flangia Interna</i>	€ 23,50	€ 31,10	€ 65,20
27	<i>Giunto Elastico</i>	€ 9,50	€ 32,50	€ 45,00
28	<i>Flangia Esterna</i>	€ 17,80	€ 30,00	€ 76,80
		6207 ZZ	6308 ZZ	6309 ZZ
05-10	<i>Cuscinetti - Bearings</i>	€ 8,36	€ 16,2	€ 19,3

UNICREDIT cod. IBAN: IT 84L0322666360000500011235 + CREDEM cod. IBAN: IT 69 Y 0303266210010000000994

CONDIZIONI GENERALI DI VENDITA: La merce viaggia a rischio e pericolo del committente anche se venduta franco destino. Trascorsi 8 gg. dal ricevimento della merce non si accettano reclami. In caso di ritardato pagamento vi saranno addebitati gli interessi di mora pari al tasso bancario in vigore al momento. Per ogni controversia sarà competente il Foro di Reggio Emilia.

STATIONARY WIRING DIAGRAM

