

JETBLASTER

HIGH PRESSURE WATER BLASTERS



CONTRACTOR
4000/18

Contents

PREPARATION FOR USE	3
START OF DAY PROCEDURE	4
OPERATING INSTRUCTIONS	4
SHUT DOWN PROCEDURE	4
WHEN FINISHED FOR THE DAY	4
MAINTENANCE	5
PUMP:	5
MOTOR:	5
FILTERS:	5
FUEL FILTER:	5
DETERGENT LINE (if fitted):	5
GENERAL INFORMATION	6
INSTALLATION	6
DELIVERY PIPEWORK	6
STARTING PROCEDURE	6
LUBRICATION	6
FREEZING CONDITIONS	6
FAULTS AND REMEDIES	7
CONTACT DETAILS:	9
G10 RIELLO BURNER BREAKDOWN	10
K-7 BYPASS BREAKDOWN	11
PUMP BREAKDOWN	13

PREPARATION FOR USE

YOU WILL NEED:

WATER SUPPLY CONNECTION

Water hose minimum $\frac{3}{4}$ connected to a tank or above outlet level with machine.

Return line from bypass back to the tank.

ELECTRICAL CONNECTION

Not required.

FUEL

This machine can ONLY run diesel fuel.

CAUTION

- Do not use kerosene
- Do not use petrol or any oil containing petrol. This may explode the boiler
- Sufficient air must be available for combustion
- Use properly ventilated areas to ensure free flow of air to the burner
- Beware of tight locations and exhaust fans
- Combustion with inadequate oxygen produces dangerous carbon monoxide

MOUNTING:

Ensure unit is bolted down secure, including hose reel.

START OF DAY PROCEDURE

BEFORE STARTING:

1. Ensure the unit is on flat ground
2. Fill fuel tank
3. Check pump oil level (Fill if needed with SAE 15/40W oil)
4. Check motor oil level (Fill if needed with Non-Detergent Diesel Oil)
5. Check over all high-pressure hoses
 - Inspect for cracks in hose
 - Inspect for bare threads of steel braid, chunks of rubber missing
 - Inspect for hose pulling out of crimp fittings(Any of the above faults indicate the hose needs repairing)
6. Inspect lances and guns for breakage or leaks.

OPERATING INSTRUCTIONS

1. Connect all hoses: inlet and high-pressure hoses, and bypass hose back to the header tank. (If no header tank is being used, then place bypass hose on the ground away from the machine.)
2. Ensure burner switch is in OFF position
3. Connection lance to be used
4. Start unit
5. Allow unit to run for 20 seconds to warm unit up
6. If burner required, switch burner on
7. You are now ready to start
8. When using the unit, select an area to clean and pull the trigger to start

SHUT DOWN PROCEDURE

1. Switch off burner
2. Run unit on cold until the water is cool
3. Switch off machine

WHEN FINISHED FOR THE DAY

1. Remove lances and fit into toolbox
2. Wind up hose
3. Disconnect inlet water ONLY if running from a tap.

MAINTENANCE

A general service should be done in the first 50 hours and then every 250 to 300 hours of use. (The machine has an hour counter, so this can be checked if unsure of the usage of the machine.)

PUMP:

- Check oil levels weekly, use SAE 15/40W oil to top up when needed.
- Oil level is indicated by dip stick at rear of pump.
- Change oil every 6 months or 250 to 300 hours of operation
- Suck oil out through dip stick hole at the top of the pump or drain from drain plug on back end or bottom of the pump.

MOTOR:

- Do regular maintenance as per Perkins maintenance schedule. (Full manual enclosed)

FILTERS:

- Inlet water filter needs to be cleaned once a week or more frequently if necessary.

FUEL FILTER:

- Check the fuel filter every month and replace if needed.

DETERGENT LINE (if fitted):

- Ensure the detergent line is fitted tightly over barbs.
Loose fitting line will allow air to be sucked in causing loss of pressure or pulsating output.
Extended operation with air leakage will damage the pump.

CAUTION:

- **DO NOT run the pump dry, this will cause the pump seals to fail**
- **DO NOT extend pumps rated pressure: 20,5000 KPA 3000 PSI models**
- **DO NOT close off trigger gun more often than necessary to avoid unnecessary wear and tear on the components**

- **DO NOT allow detergent tank to run dry and suck air, shut off metering valve immediately, allow pump to re-prime and fill detergent tank. (if fitted).**

GENERAL INFORMATION

The pumps should only be used with clean water or water/detergent mixtures. Please contact our technical department 03 9762 2220 or your local service agent before using the pumps with corrosive additives such as acids.

INSTALLATION

Pump installation is easy providing you follow the instructions carefully. Correct installation will ensure the best performance and maximum life of the pump.

DELIVERY PIPEWORK

It is important that the internal diameter of the hose is at least the same diameter as that of the pump outlet to avoid excessive pressure loss down the hose.

The pumps should not be allowed to work more than 10% higher than the maximum operating pressure shown on the pump.

STARTING PROCEDURE

On no account must the pump be run dry for longer than a few seconds. Check that the filter is clean and then start the pump whilst priming the pump as rapidly as possible by opening any discharge valve to allow air to escape.

LUBRICATION

Check the oil level from time to time. Change the oil after 50 hours of operation and then after every 250 to 300 hours. Use SAE 15/40W oil.

FREEZING CONDITIONS

If the area the unit is in is in freezing conditions, then empty the pump by running for 20 seconds without any water supply. This ensures there is no water left in the pump which protects the pump from water getting frozen and damaging the pump.

FAULTS AND REMEDIES

PUMP RUNNING NORMALLY BUT PRESSURE LOW ON INSTALLATION

CAUSE	REMEDY
Pump sucking air	Check water supply and possibility of air ingress
Valves sticking	Check and clean/replace if necessary
Unloader valve worn out or sticking	Check and replace if necessary
Nozzle incorrectly sized	Check and replace if necessary
Worn piston packing	Check and replace if necessary

FLUCTUATING PRESSURE

CAUSE	REMEDY
Valves worn	Check and replace if necessary
Blockage in valve	Check and clean if necessary
Pump sucking air	Check water supply and air ingress at joints in suction line
Worn piston packing	Check and replace if necessary

PRESSURE LOW AFTER PERIOD OF USE

CAUSE	REMEDY
Nozzle worn	Check water supply and possibility of air ingress
Suction or delivery valves worn	Check and clean/ replace if necessary
Suction or delivery valves blocked	Check and replace if necessary
Unloader valve seat worn	Check and replace if necessary
Worn piston packing	Check and replace if necessary

PUMP NOISY

CAUSE	REMEDY
Air suction	Check water supply and corrections on suction line
Broken or weak suction of delivery valve spring	Check and replace if necessary
Foreign matter in valve	Check and clean if necessary
Worn bearings	Check and replace if necessary
Excessive temperature of liquid	Reduce to below 75 degrees C
Worn out pump internally	Check and replace if necessary

PRESENCE OF WATER IN OIL

CAUSE	REMEDY
Oil seal worn	Check and replace if necessary
High humidity in air	Check and change oil twice as often
Piston packing worn	Check and replace if necessary

WATER DRIPPING FROM UNDER THE PUMP

CAUSE	REMEDY
Piston packing worn	Check and replace if necessary
O.R. plunger retainer worn	Check and replace if necessary
Broken Piston or Pistons	Check and replace if necessary

OIL DRIPPING

CAUSE	REMEDY
Oil seal worn	Check and replace if necessary

EXCESSIVE VIBRATION IN DELIVERY LINE

CAUSE	REMEDY
Accumulator pressure too low	Check and re-pressure if necessary
Irregular functioning of the valves	Check and replace if necessary

NO BURNER

CAUSE	REMEDY
Flame sensor activated	<ol style="list-style-type: none">1. Reset Riello burner2. Clean flame sensor3. Fill with fuel
Pressure switch failure	Replace pressure switch
Control box fail, no ignition	Replace control box

BURNING DIRTY

CAUSE	REMEDY
Water in fuel	<ol style="list-style-type: none">1. Drain fuel tank2. Refill with fuel3. Replace fuel filter
Coil sooted up	<ol style="list-style-type: none">1. Remove and de-soot the coil2. Re-set burner as per Riello burner instructions

FLAME STOPS

CAUSE	REMEDY
Fuel filter clogged	Replace fuel filter
Low fuel	<ol style="list-style-type: none">1. Fill with fuel2. Press the reset button

CONTACT DETAILS:

JETBLASTER AUSTRALIA PTY LTD

Address: Unit 10/ 6 Holloway drive Bayswater, VIC, 3153

PH: 03 9762 2220

Fax: 03 9762 7260

Email: sales@jetblaster.com.au

G10 RIELLO BURNER BREAKDOWN

Catalogo ricambi
Spare parts list
Catalogue pièces détachées
Ersatzteile Katalog
Catálogo recambios

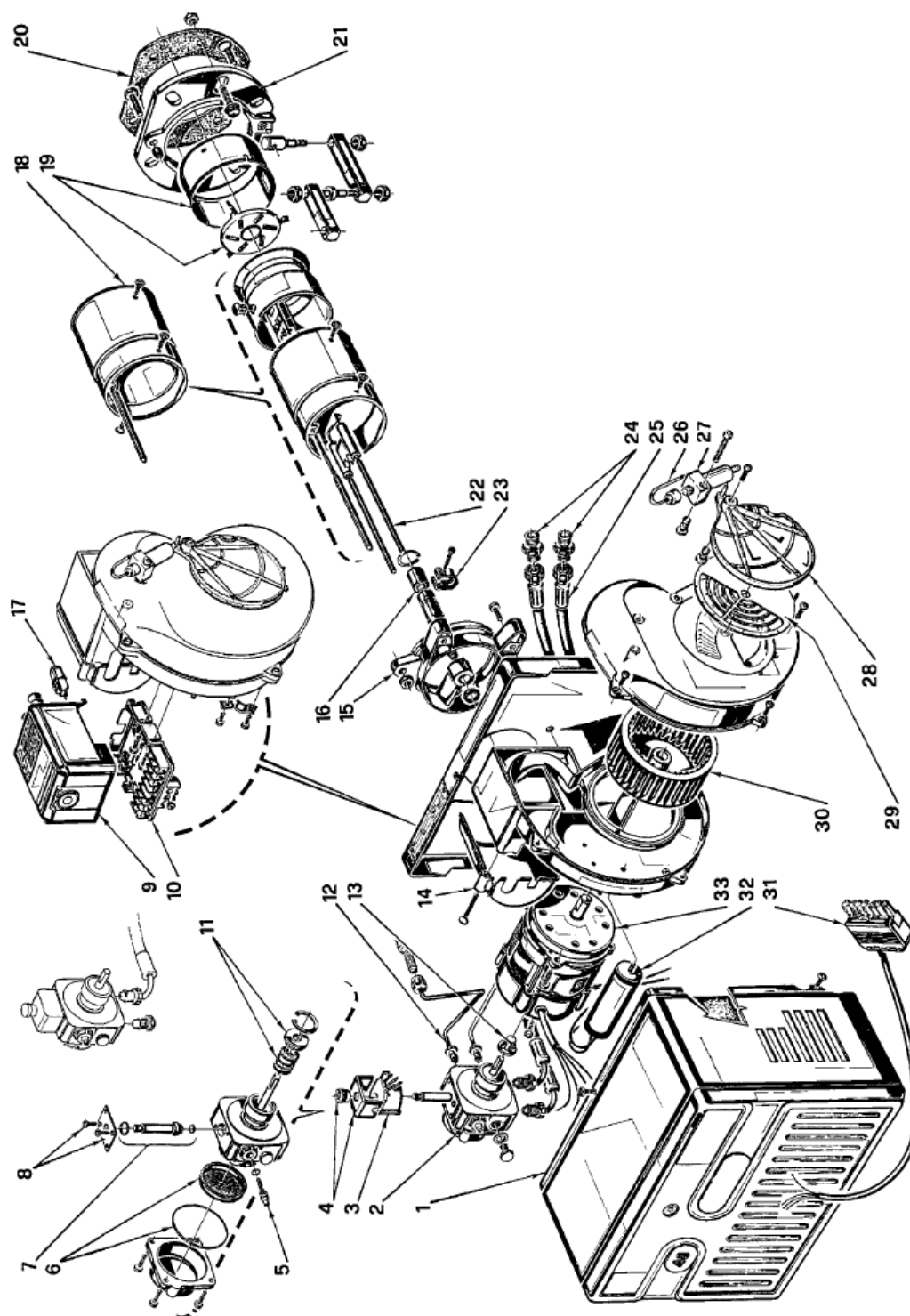


Bruciatori di gasolio • Light oil burners • Brûleurs fioul • Öl-Gebläsebrenner
Quemadores de gasóleo

RIELLO 40 G10

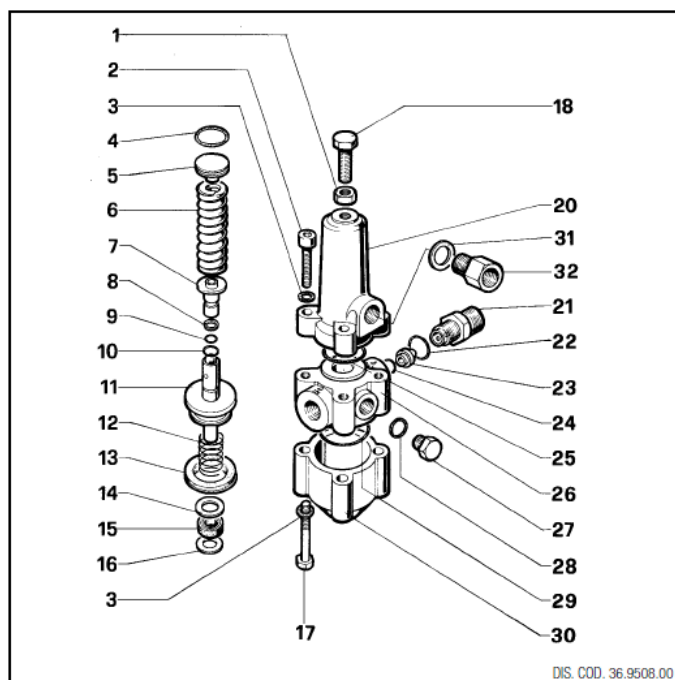
COD. 3746412 - 3746414

TIPO / TYPE / TYP 464 T1



N.	COD.	DESCRIZIONE	DESCRIPTION	DESCRIPTION	BESCHREIBUNG	DENOMINACIÓN
1	3007234	COFANO	COVER	CAPOT	BRENNERHAUBE	ENVOLVENTE
2	3007800	POMPA	PUMP	POMPE	ÖLPUMPE	BOMBA
3	3002279	BOBINA	COIL	BOBINE V. M.	MAGNETVENTIL - SPULE	BOBINA
4	3006553	MANTELLO E POMELLO	SHELL AND KNOB	ETRIER ET ECROU	HALTEBÜGEL MIT SCHRAUBE	PROTECCIÓN BOBINA
5	3007202	REGOLATORE	REGULATOR	REGULATEUR PRESSION POMPE	DRUCKREGULIERSCHRAUBE	REGULADOR
6	3008553	FILTRO - ANELLO OR	FILTER - O-RING	FILTRE - JOINT TORIQUE	FILTEREINSATZ - O-RING-DICHTUNG	FILTRO - JUNTA TÓRICA
7	3006925	VALVOLA	NEEDLE VALVE	VANNE MAGNETIQUE	MAGNETVENTIL-KÖRPER	VALVULA
8	3007203	PIASTRINA	PLATE	PLAQUETTE ETRIER	PLATTE	PLATINA
9	3001156	APPARECCHIATURA 530SE*	CONTROL BOX 530SE*	BOITE DE CONTROLE 530SE*	STEUERGERÄT 530SE*	CAJA DE CONTROL 530SE*
10	3002278	MORSETTIERA	TERMINAL BOARD	BORNIER	STECKSOCKEL	REGLETA DE CONEXIÓN
11	3000439	ORGANO DI TENUTA	PUMP SEAL	ORGANE D'ETANCHEITE	DICHTUNGSEINSATZ ANTRIEBSW.	CONJUNTO ESTANQUIDAD
12	3005789	TUBO	TUBE	TUYAU	DRUCKROHR	TUBO
13	3000443	GIUNTO	JOINT	ACCOUPLEMENT	PUMPENKUPPLUNG	ACOPLAMIENTO
14	3006557	COPERCHIO	COVER	COUVERCLE	DÜSENSTOCK-FLANSCH	TAPA
15	3005791	COLLARE	COLLAR	COLLIER	BRENNERFLANSCH	COLLARÍN
16	3005764	PORTAUGELLO	NOZZLE HOLDER	PORTE-GICLEUR	DÜSENSTOCK	PORTABOQUILLA
17	3002280	FOTORESISTENZA	P.E. CELL	CELLULE PHOTORESISTANCE	FOTOWIDERSTAND	FOTORESISTENCIA
18	3006151	BOCCAGLIO	BLAST TUBE	GUEULARD	FLAMMROHR	TUBO LLAMA
19	3006392	ANELLO - ELICA	END RING AND DIFFUSER DISC	EMBOUT GUEULARD - ACCR. FLAMME	FLAMMKOPF - STAUSCHEIBE	ANILLO LLAMA - DISCO ESTABILIZAD.
20	3005795	SCHERMO	GASKET	JOINT ISOLANT	KESSELFLANSCH-DICHTUNG	JUNTA AISLANTE
21	3005796	FLANGIA	FLANGE	BRIDE	KESSELFLANSCH	BRIDA
22	3002918	GRUPPO ELETTRODI	ELECTRODE ASSEMBLY	GROUPE ELECTRODES	ELEKTRODENBLOCK	ELECTRODOS
23	3006552	FASCETTA	ELECTRODE BRACKET	SUPPORT ELECTRODES	ELEKTRODEN HALTERUNG	SOPORTE ELECTRODOS
24	3009068	RACCORDO	CONNECTOR	MAMELON	ANSCHLUßNIPPEL	RACORD
25	3005720	TUBO FLESSIBILE	FLEXIBLE OIL LINE	FLEXIBLE	ÖLSCHLAUCH	TUBO FLEXIBLE
26	3007815	TUBO	TUBE	TUYAU	DRUCKROHR	TUBO
27	3006911	MARTINETTO	HYDRAULIC JACK	VERIN AIR	LÜFTKLAPPE DRUCKKOLBEN	HIDRAULICO DE AIRE
28	3000879	SERRANDA ARIA	AIR DAMPER	VOLET D'AIR	LÜFTKLAPPE	REGISTRO DEL AIRE
29	3007205	SERRANDA ARIA	AIR DAMPER	VOLET D'AIR	LÜFTKLAPPE	REGISTRO DEL AIRE
30	3005788	GIRANTE	FAN	TURBINE	GEBLÄSERAD	TURBINA
31	3006386	PRESA A 7 POLI	7 POLE SOCKET	PRISE 7 POLES	7 - POLIGE STECKDOSE	CONEC. HEMBRA DE 7 CONTACTOS
32	3005798	CONDENSATORE 4 µF	CAPACITOR 4 µF	CONDENSATEUR 4 µF	KONDENSATOR 4 µF	CONDENSADOR 4 µF
33	3008451	MOTORE	MOTOR	MOTEUR	MOTOR	MOTOR

K-7 BYPASS BREAKDOWN



K7

KIT N.	KIT 70
Positions Included	4 - 7 - 8 - 9 - 10 11 - 12 - 13 - 15 - 16 22 - 24 - 25 - 28 - 29
Posizioni Incluse	
N. pcs.	1

*** TAB. "A" - TABLE "A"

MODEL	POS.	CODE CODICE	DESCRIPTION DESCRIZIONE	N. PCS.
K 7.0 8÷11 l/min.	21	10.0078.70	Nipplo G 3/8 con foro Ø 3	1
	23	10.0076.66	Ugello Ø 2,2	1
	32	36.3117.70	Nipplo G 3/8	1
K 7.1 11÷16 l/min.	21	10.0078.70	Nipplo G 3/8 con foro Ø 3	1
	23	10.0077.66	Ugello Ø 2,5	1
	32	36.3116.70	Nipplo G 3/8	1
K 7.2 16÷25 l/min.	21	10.0160.70	Nipplo G 3/8 con foro Ø 3,25	1
	23	10.0162.66	Ugello Ø 2,75	1
	32	36.3118.70	Nipplo G 3/8	1
K 7.3 25÷41 l/min.	21	10.0161.70	Nipplo G 3/8 con foro Ø 3,5	1
	23	10.0163.66	Ugello Ø 3	1
	32	36.3119.70	Nipplo G 3/8	1

POS.	CODE CODICE	DESCRIPTION DESCRIZIONE	N. PCS.
1	92.2368.00	Dado M10	1
2	99.3084.00	Vite M8x30 UNI 5931	4
3	96.7014.00	Rosetta Ø 8,4x13x0,8	8
4	90.3849.00	OR Ø 20,63x2,62	KIT 70 1
5	36.3095.70	Piattello molla	1
6	94.7466.00	Molla Ø 17x60	1
7	36.3094.66	Sede valvola	KIT 70 1
8	90.5052.00	Anello per OR	KIT 70 1
9	90.3820.00	OR Ø 9,13x2,62 - Spec.	KIT 70 1
10	90.3582.00	OR Ø 9,25x1,78	KIT 70 1
11	36.3097.02	Assieme pistoncino e sfera	KIT 70 1
12	94.7464.00	Molla Ø 17x17	KIT 70 1
13	90.2766.00	Anello tenuta Ø 40	KIT 70 1
14	96.7215.00	Rosetta Ø 13x20x2	1
15	90.2565.00	Anello tenuta Ø 10	KIT 70 1
16	90.5063.00	Anello per OR	KIT 70 1

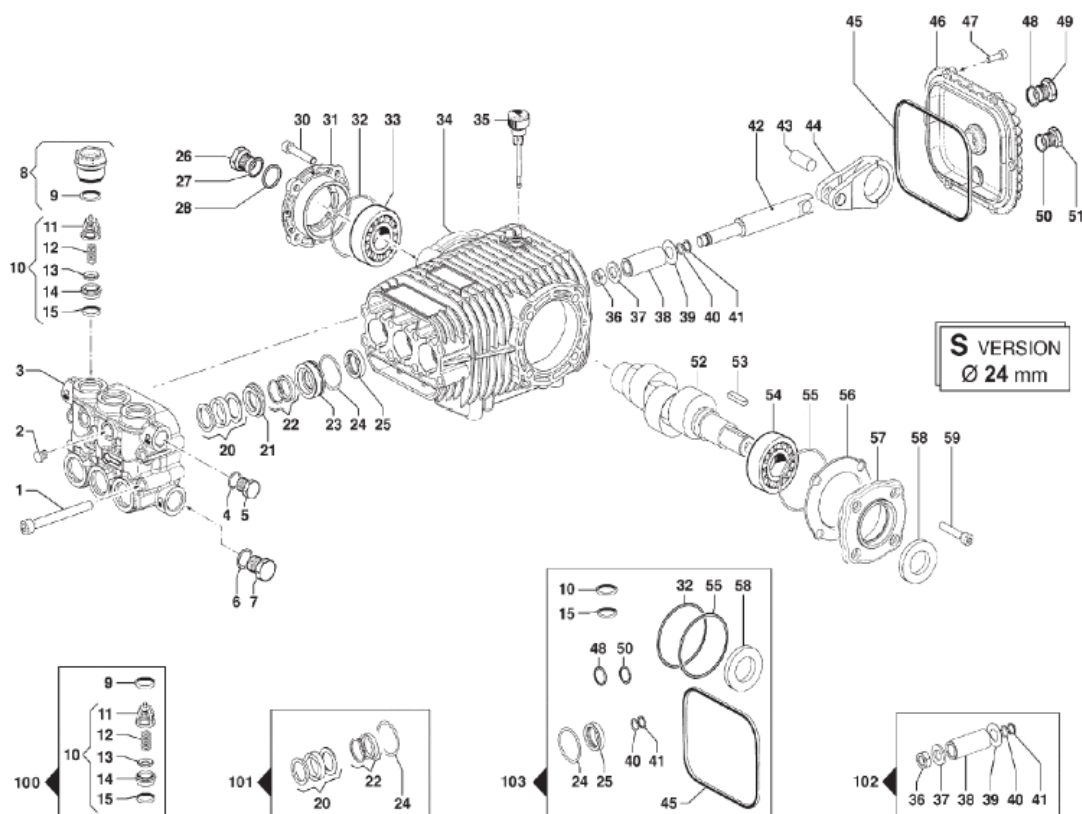
POS.	CODE CODICE	DESCRIPTION DESCRIZIONE	N. PCS.
17	99.3127.00	Vite M8x45 UNI 5737	4
18	99.3663.00	Vite M10x25 UNI 5740	1
20	36.3090.41	Corpo valvola superiore	1
21	***	Vedi Tab. "A" - See table "A"	
22	90.3833.00	OR Ø 13,95x2,62	KIT 70 1
23	***	Vedi Tab. "A" - See table "A"	
24	90.3823.00	OR Ø 9,92x2,62	KIT 70 1
25	90.3863.00	OR Ø 28,25x2,62	KIT 70 1
26	36.3091.41	Corpo valvola centrale	1
27	98.2041.00	Tappo G 1/4x9	2
28	90.3585.00	OR Ø 10,82x1,78	KIT 70 2
29	90.3871.00	OR Ø 34,60x2,62	KIT 70 1
30	36.3092.41	Corpo valvola inferiore	1
31	96.7380.00	Rosetta Ø 17,5x23x1,5	1
32	***	Vedi tab. "A" - See table "A"	

PUMP BREAKDOWN

RW

Pompe - Pumps

1450 RPM



N°	Cod.	Descrizione	Description	Note	Qty	Model
1	3609 0039	Vite	Screw	M8X 70	8	
2	3202 0112	Tappo	Plug	G1/4	1	
3	3218 0373	Testata Pompa	Pump Manifold	Ø20	1	3035 S - 3530 S 3535 S - 4022 S 4030 S - 4035 S 5022 S - 5030 S 5035 S - 5522 S 5530 S - 5535 S 6030 S
	3218 0393	Testata Pompa	Pump Manifold	Ø18	1	3040 S - 3540 S 4040 S - 4540 S 5040 S
4	2811 0084	Rondella	Washer	Ø16,7x22x1,5	1	
5	3200 0007	Tappo	Plug	3/8 GAS	1	
6	2811 0086	Rondella	Washer	Ø21,2x27x1,5	1	
7	3202 0015	Tappo	Plug	G1/2	1	
8	3202 0315	Kit Tappo + O-Ring	Valve Plug Kit + O-Ring		6	
9	1210 0048	Guarnizione OR	O-Ring	Ø2,62x20,24	6	
10	1220 0030	Valvola Aspiraz./Mandata	Suction/Delivery Valve	Basse portate Low Flow	6	3035 S - 3040 S 3530 S - 3535 S 3540 S - 4022 S 4030 S - 4035 S 4040 S - 4540 S
	1220 0072	Valvola Aspiraz./Mandata	Suction/Delivery Valve	Alte portate High Flow	6	5022 S - 5030 S 5035 S - 5040 S 5522 S - 5530 S 5535 S - 6030 S
11	1205 0025	Gabbia Valv. Aspir./Mand.	Suction/Delivery Valve Cage	Basse portate Low Flow	6	3035 S - 3040 S 3530 S - 3535 S 3540 S - 4022 S 4030 S - 4035 S 4040 S - 4540 S
	1205 0043	Gabbia Valv. Aspir./Mand.	Suction/Delivery Valve Cage	Alte portate High Flow	6	5022 S - 5030 S 5035 S - 5040 S 5522 S - 5530 S 5535 S - 6030 S

N°	Cod.	Descrizione	Description	Note	Qty	Model
12	1802 0177	Molla Valv. Aspir./Mand.	Suct/Delivery Valve Spring		6	
13	3604 0017	Valvola Aspiraz./Mandata	Suct/Delivery Valve		6	
14	3009 0087	Sede Valv. Aspir./Mand.	Suct/Delivery Valve Seat		6	
15	1210 0046	Guarnizione OR	O-Ring	Ø2,62x17,13	6	
20	1241 0079	Guarnizione Tenuta	Packing	Ø20	3	3035 S - 3530 S 3535 S - 4022 S 4030 S - 4035 S 5022 S - 5030 S 5035 S - 5522 S 5530 S - 5535 S 6030 S
	1241 0073	Guarnizione Tenuta	Packing	Ø18	3	3040 S - 3540 S 4040 S - 4540 S 5040 S
21	0009 0352	Anello Portaguarnizione	Packing Retainer	Ø20	3	3035 S - 3530 S 3535 S - 4022 S 4030 S - 4035 S 5022 S - 5030 S 5035 S - 5522 S 5530 S - 5535 S 6030 S
	0009 0358	Anello Portaguarnizione	Packing Retainer	Ø18	3	3040 S - 3540 S 4040 S - 4540 S 5040 S
22	1241 0080	Guarnizione Tenuta	Packing	Ø20	3	3035 S - 3530 S 3535 S - 4022 S 4030 S - 4035 S 5022 S - 5030 S 5035 S - 5522 S 5530 S - 5535 S 6030 S
	1241 0074	Guarnizione Tenuta	Packing	Ø18	3	3040 S - 3540 S 4040 S - 4540 S 5040 S

N°	Cod.	Descrizione	Description	Note	Qty	Model
23	0009 0353	Anello Portaguarnizione	Packing Retainer	Ø20	3	3035 S - 3530 S 3535 S - 4022 S 4030 S - 4035 S 5022 S - 5030 S 5035 S - 5522 S 5530 S - 5535 S 6030 S
	0009 0359	Anello Portaguarnizione	Packing Retainer	Ø18	3	3040 S - 3540 S 4040 S - 4540 S 5040 S
24	1210 0156	Guarnizione OR	O-Ring	Ø1,78X 31,47	3	
25	0019 0126	Anello Tenuta Olio	Oil Seal	Ø20x28x5	3	
26	3201 0026	Tappo Livello Olio	Oil Level Plug		1	
27	1210 0333	Guarnizione OR	O-Ring	Ø1,78X 23,52	1	
28	3019 0033	Seeger	Seeger	Ø28	1	
30	3609 0157	Vite	Screw	M8x18	4	
31	1009 0242	Flangia	Flange		1	
32	1210 0448	Guarnizione OR	O-Ring	Ø2,0x70	1	
33	0440 0031	Cuscinetto Rulli Conici	Roller Bearing	Ø30x62x21,25	1	
34	0403 0168	Carter Pompa	Pump Crankcase		1	
35	3200 0051	Tappo Olio	Oil Dipstick		1	
36	0600 0054	Dado Speciale	Special Bolt		3	
37	2811 0062	Rondella	Washer	Ø8,4x16x1,5	3	
38	0202 0024	Bussola Ceramica	Ceramic Bushing	Ø20	3	3035 S - 3530 S 3535 S - 4022 S 4030 S - 4035 S 5022 S - 5030 S 5035 S - 5522 S 5530 S - 5535 S 6030 S
	0202 0022	Bussola Ceramica	Ceramic Bushing	Ø18	3	3040 S - 3540 S 4040 S - 4540 S 5040 S
39	2812 0094	Rondella	Washer		3	
40	1210 0039	Guarnizione OR	O-Ring	Ø1,78x7,65	3	
41	0009 0170	Anello BK	Anti-Extr. Ring		3	
42	2409 0139	Pistone Guida	Piston		3	
43	3011 0016	Spinotto	Gudgeon Pin	Ø10X29	3	
44	0205 0044	Biella	Connecting Rod		3	
45	1210 0605	Guarnizione OR	O-Ring	Ø3,0 X118	1	
46	0402 0307	Coperchio Carter	Cover		1	
47	3609 0030	Vite	Screw	M5x20	6	
48	1210 0048	Guarnizione OR	O-Ring	Ø2,62x20,24	1	
49	3201 0027	Tappo Livello Olio	Oil Level Plug	G1/2	1	
50	1210 0441	Guarnizione OR	O-Ring	Ø2x14	1	
51	3200 0007	Tappo	Plug	3/8 GAS	1	
52	0001 0574	Albero Maschio	Solid Crankshaft	Ø24	1	3035 S
	0001 0575	Albero Maschio	Solid Crankshaft	Ø24	1	3040 S
	0001 0572	Albero Maschio	Solid Crankshaft	Ø24	1	3530 S - 3535 S
	0001 0569	Albero Maschio	Solid Crankshaft	Ø24	1	3540 S - 4022 S 4030 S - 4035 S
	0001 0570	Albero Maschio	Solid Crankshaft	Ø24	1	4040 S - 5022 S 5030 S - 5035 S
	0001 0571	Albero Maschio	Solid Crankshaft	Ø24	1	4540 S - 5522 S 5530 S - 5535 S
	0001 0573	Albero Maschio	Solid Crankshaft	Ø24	1	5040 S - 6030 S

N°	Cod.	Descrizione	Description	Note	Qty	Model
53	1602 0013	Linguetta	Key	8x7x30	1	
54	0440 0031	Cuscinetto Rulli Conici	Roller Bearing	Ø30x62x21,25	1	
55	1210 0448	Guarnizione OR	O-Ring	Ø2,0x70	1	
56	0601 0304	Distanziale	Spacer	sp. 0,05	1	
56	0601 0305	Distanziale	Spacer	sp. 0,1	1	
56	0601 0306	Distanziale	Spacer	sp. 0,19	1	
56	0601 0307	Distanziale	Spacer	sp. 0,25	1	
57	1009 0241	Flangia	Flange		1	
58	0019 0007	Anello Tenuta Olio	Oil Seal	Ø25X52X7	1	
59	3609 0157	Vite	Screw	M8x18	4	

Kit Ricambi

Spare Parts Kit

100	5025 0011	Kit Valvola Aspir./ Mandata	Complete Valve Kit	Basse portate Low Flow	1	3035 S - 3040 S 3530 S - 3535 S 3540 S - 4022 S 4030 S - 4035 S 4040 S - 4540 S
	5025 0025	Kit Valvola Aspir./ Mandata	Complete Valve Kit	Alte portate High Flow	1	5022 S - 5030 S 5035 S - 5040 S 5522 S - 5530 S 5535 S - 6030 S
101	5019 0672	Kit Guarnizioni Acqua	Water Seal Kit	Ø20mm	1	3035 S - 3530 S 3535 S - 4022 S 4030 S - 4035 S 5022 S - 5030 S 5035 S - 5522 S 5530 S - 5535 S 6030 S
	5019 0673	Kit Guarnizioni Acqua	Water Seal Kit	Ø18mm	1	3040 S - 3540 S 4040 S - 4540 S 5040 S
102	2409 0145	Kit Pistone	Piston Kit	Ø20mm	1	3035 S - 3530 S 3535 S - 4022 S 4030 S - 4035 S 5022 S - 5030 S 5035 S - 5522 S 5530 S - 5535 S 6030 S
	2409 0146	Kit Pistone	Piston Kit	Ø18mm	1	3040 S - 3540 S 4040 S - 4540 S 5040 S
103	5019 0675	Kit Guarnizioni Olio	Oil Seal Kit		1	